



PARK BEAT

The Pulse of Greater Boulevard Park

Boulevard Park Neighborhood Association ■ Box 163179, Sacramento 95816 ■ November 2017

THE RETURN OF "THE CLAW" (NOT A HALLOWEEN JOKE)

The city's ace debris picker-upper, aka "*The Claw*", will return to Sacramento streets on November 1 and will continue service through January 31, 2018. Leaf pile pickup occurs approximately every two weeks. The interactive SacRecycle Collection Calendar (<http://www.cityofsacramento.org/public-works/RSW/Collection-Services/Collection-Calendar>) includes dates of collection for your street. The schedule is updated daily based on volume of yard waste from the previous day, weather conditions and equipment availability -- collection dates do change often.



But please, **fill your yard waste containers first** to keep as many leaves off the street as possible and to allow more efficient removal of leaves from the streets. Leaf piles can obstruct rain water drainage, are hazardous for bicyclists, and take up room at the curb that you and your neighbors need to park. If your container overfloweth and you must make a leaf pile, place the pile six feet from any obstruction, like parked cars, and avoid placing piles in bike lanes where possible. Most importantly, keep the pile a few feet from the curb to allow water to flow to storm drains and to prevent street flooding.

Two final tips – 1) don't put doggy waste in the leaf piles, and 2) don't put your leaves in plastic bags.

The leaves will be composted, and both practices are the enemies of the compost program.

BPNA Board Nominations

**Nominations now open for
Board of Directors for 2018.**

Elections will be held at the General meeting, January 16 at 6:30 pm at location TBA. Names of any BPNA members interested in serving on the Board will be accepted through Nov. 21. Please email a brief bio along with your email of interest to Nominations Chairman, Eric Knutson. All residents of Boulevard Park are welcome to become members, and all members may vote in the election.

BPNA Holiday Party

Join BPNA and our gracious host, the McDaniels, spread some holiday cheer at the annual Holiday Potluck Party.

Saturday, December 9th - 6:30-9p at 626 21st St.

Bring your most festive main course, side or dessert. The party this year will be BYOB, and some nonalcoholic drinks will be available.

Share some yuletide with your neighbors and spread good will to your fellow man.

THANKS, BELATED BUT SINCERE

We inadvertently neglected to include Colleen Whalen in our list of Spaghetti Dinner kitchen volunteers – many thanks for your time and effort, Colleen!

Also, due to lack of newsletter space, we did not properly thank those that put together the great National Night Out (NNO) Progressive Dinner August 1st. First and foremost, we thank Councilman Steve Hansen and the Sacramento police officers who took time to be with us and discuss problems in the neighborhood -their involvement is what drives this event.

This year we moved the hors d'oeuvres course from G to C Streets so that NNO could span the neighborhood. We got an excellent turn-out of 40 people or more, thanks largely to the efforts of Suzie Johnston and her crew, who put out flyers and knocked on doors to personally invite people unfamiliar with the event, and who also supplied stickers, decorations, raffle tickets, and other amusements. Thanks as always to Fred Hull and Susan Allair, who once again generously opened their yard for the main course and kept the party going after dinner. We also thank the behind-the-scene workers: Eric Knutson, who transported the tables and chairs; Liz Edmonds, who supplied the Boulevard Park history books that were our raffle prizes; and Margaret Buss, who, along with Liz, posted signs to guide people to the new location. We thank our good friends from Marshall School-New Era Park Neighborhood Association who hosted the dessert course in Marshall Park and joined us at our as well. Co-hosting the event has been a long tradition to remind us of our shared community. And last but not least, we thank everyone who brought conversation and food to share – getting to know neighbors is what it is all about.



Electromagnetic fields (EMF) and You!

Boulevard Park resident Whitney Leeman has been investigating whether there are health risks associated with the high current SMUD power lines that run along 20th Street adjacent to her home. She borrowed a free magnetic field measurement meter from SMUD and took measurements in and around her home, as well as up and down 20th Street. She found the magnetic fields to be high, especially in her bedroom area which is very close to the wires outside her window.

When asked about health effects the SMUD representative said that health effects due to magnetic fields are uncertain. Whitney hired a specialist to create a comprehensive EMF assessment and is creating a petition to ask SMUD to mitigate the EMF; numerous options exist to reduce the magnetic fields created by the power lines.

Whitney and other concerned neighbors will join Eric Windheim, electromagnetic radiation specialist, at the Urban Hive, 20th & “H” Streets on Tuesday, November 7th, from 6:30 to 8:00 pm, for a 30 minute presentation followed by a question and answer period and a chance to sign the SMUD petition.

If you would like to attend, due to limited seating, please RSVP @ whitney.r.leeman@gmail.com

DAVE BOBERG WOOD FLOORS

3rd Generation Hardwood Floor Craftsman

COMMERCIAL & RESIDENTIAL

New Floors Installed

OLD FLOORS MADE NEW

PRESENT THIS
AD & RECEIVE
\$150 OFF*

*minimum job
required

CELL (916) 390-2795

EMAIL bobergdave@gmail.com
Lic. #830023

“ALL WORKMANSHIP GUARANTEED”

**ASK ABOUT MY “REFER A
FRIEND” INCENTIVE**

Margaret Buss bussmlou@gmail.com
Ty Dockery tyd71@icloud.com
Majorie Duffy, Membership marj_duffy@sbcglobal.net
Liz Edmonds, Treasurer liz@lizedmonds.com
David Herbert davidmather446@gmail.com
Eric Knutson, Chair eric@knutsonarchitecture.com
Vacancy

Boulevard Park Neighborhood Association purpose: The BPNA is created to support, promote, and improve the quality of life for the residents of the greater Boulevard Park neighborhood. By achieving this goal we strive thereby to improve the quality of life for others who work and live in and around Boulevard Park and therefore Sacramento as a whole.

Committees

Membership: Majorie Duffy, 916 448-4659
Preservation: Eric Knutson, 925 324-0587

Park Beat Production Team

Designer: Open
Editor: Catherine Turrill, sac16712@csus.edu
Block Captain Coordinator: Joe Cress, 916 698-7938
cressj@saccounty.net
Ad Manager: Jennifer Knutson, 925 324-1289
jennifer@knutsonarchitecture.com

Neighborhood Treasure: Tiny Library

This three-story (no pun intended) Victorian-esque tiny lending library is sponsored by the residents of 725 21st Street. Passersby are invited to take a book or leave a book - it's recycling literature in the most rewarding way and you get a clue as to the tastes of your neighbors.



If you have some favorite places or things you have found while walking the neighborhood, or a favorite walking experiences, contact Margaret Buss at bussmlou@gmail.com We'd be glad to share them in the newsletter.

THE TREES OF MIDTOWN The Red Maple



Which of midtown Sacramento's street trees is the champion when it comes to brilliant fall color?

It just may be the Red Maple, a tree variety that the City has been planting more frequently of late.

One Red Maple variety, called "October Glory" is especially spectacular with its intense scarlet fall foliage.

Red Maple (*Acer rubrum*) is one of the most common deciduous trees of eastern and central North America. It is very adaptable to a wide range of soil conditions from swamps to poor dry soils, and most anywhere in between. Red Maple's other advantages include rapid growth, ease of transplanting, attractive form, vigorous habit, attractive red flowers, and of course that flaming red fall foliage. Red Maple is very tolerant of drought with its ability to stop growing under dry conditions, but then produce a second growth flush when conditions improve.

Red Maple is used commercially for maple syrup production, but only on a small scale. Other Maple tree varieties are more productive for syrup. Red Maple is also used for its medium to high quality lumber, and it's a fine landscape tree too.

The Red Maple reaches maturity in about 75 years and has a life span of about 150 years. It is a food source of elk and white tailed deer, along with various varieties of butterfly and moth. The leaves are extremely toxic to horses, especially when the leaves are dead or wilted. The Red Maple makes a vibrant and colorful bonsai.

To see great examples of the Red Maple in midtown Sacramento, visit the south side of "G" Street between 21st and 22nd Streets where there are 3 or 4 medium sized trees. If you are not sure which trees are the Red Maple, wait until the fall leaf season when they really stand out.

DOWNTOWN SPECIFIC PLAN DRAFT EIR

IT'S TIME TO SPEAK YOUR MIND

The Draft Environmental Impact Report (DEIR) for the Downtown Specific Plan (DSP) is now in public review. Although there will be further presentations on the Plan and EIR at public hearings in January 2018, this is probably the last opportunity to influence the DSP and EIR findings. BPNA strongly urges residents to take a look at both the Plan and the DEIR, see what leaps out at you as either problems or benefits, and let the city know what you think.

You can find these documents respectively at

<http://www.cityofsacramento.org/Community-Development/Planning/Major-Projects/Downtown-Specific-Plan/Resources>,

and under Downtown Specific Plan at

<https://www.cityofsacramento.org/Community-Development/Planning/Environmental/Impact-Reports>

They look daunting on the surface: the Downtown Specific Plan, with accompanying documents such as the Central City Design Guidelines, and the DEIR and appendices, appear overwhelming, totaling over 900 pages of material. But the DSP is well laid-out and readable, with useful technical information summarized in graphics and charts, and you can easily dip into sections that concern you the most. For instance, in the housing section you'll find graphics that show that most proposed housing in the central city targets upper and upper middle income clients, but the demand by those clients is not there; most demand and need is for the current mid-to-lower income populations -- the city should be encourage to incentivize such developments. The transportation section discusses impacts of the proposed streetcar lines and envisions incorporating alleys as part of the transportation network.

The accompanying documents, such as the Central City Guidelines, are also important to look at: note that the "redlined" version shows the proposed elimination of important details, such as specific guidance on scale, height and massing, materials, textures and colors, and design elements. Also, the City is proposing "streamlining" reviews of most projects in historic districts by eliminating Preservation Director review unless requested -- this could directly affect infill in our neighborhoods, and is a matter of expressed concern by the city Preservation Commission, as well as BPNA. As of this writing, the City is moving forward on an ordinance making these changes, even though neither the DSP nor the EIR have been finalized.

The DEIR and appendices are more dense as they must meet CEQA requirements, but they are still readable. One short-cut in review is to look at the summary tables of impacts and proposed mitigations -- see if you agree that the mitigations match the impacts, then go back to the text for full information. Or just skim the sections that interest you -- you do not have to do comprehensive review to have useful comments.

BPNA will be commenting on the document and has testified at Planning and Preservation Commission meetings. One nagging overarching comment is in the name; no matter how many distinctions are made in the text of the documents, using "Downtown" as a term to cover the entire Central City, including low-rise residential neighborhoods, blurs the distinction between the Central Business District, which is properly dense and high-rise, and the surrounding residential areas, whose quality of life depends in part on its more relaxed, low to mid-rise heights.

Written comments should be submitted to: Scott Johnson, Associate Planner City of Sacramento, Community Development Department Environmental Planning Services 300 Richards Boulevard, Third Floor Sacramento, CA 95811 or SRJohnson@cityofsacramento.org. If you have questions, you can call Scott at (916) 808-5842.

Locomotive Junction

This month Locomotive Junction has a special teacher spotlight on James McDaniel. Not only is he a teacher at Washington Elementary, he is a former member of the BPNA Board of Directors as well as a current neighbor.

James McDaniel had an unusual path to becoming a teacher. James states, "I became an elementary teacher because I discovered a love for working with children when I was coaching my oldest daughter's softball team. Becoming an elementary teacher was a win-win for me. I did not have a college degree or a credential. Therefore, I fulfilled a life goal of graduating from college. Now, I work at a job that I love to do and am respected."

It's very evident that the staff at Washington Elementary has this infectious energy. This energy is right in line with McDaniel's theory of education which falls under the umbrella of CREATIVITY. "The concept of STEAM (Science, Technology, Engineering, the Arts and Mathematics) is the best vehicle to drive this creativity that we all have. Students find authentic problems to solve in this environment and develop skills to succeed in a changing workforce," states McDaniel.

McDaniel also has a dream commute. A brief half mile walk to Washington, giving him the balance of a wonderful neighborhood and great place to work.

Living in Boulevard Park neighborhood that is the home of Washington Elementary, provides him a unique experience. McDaniel states, "Like many, I believe that the potential that any school has to a neighborhood is to be a vibrant center - in other words the heart of a neighborhood. A school can be a unifying place where children learn, neighbors meet, community supports. I hope our school can be a place that the residents of Boulevard Park can point to and say to the broader community, 'This is a place of innovation and creativity,' or to quote one of my favorite phrases, 'The best way to predict the future is invent it.'"

James brings great creativity and boundless energy to every aspect of his life. We are fortunate to have James and the entire McDaniel family as neighbors.

ABC

PLUMBING HEATING & AIR CONDITIONING

Your Neighbors at 22nd & C

- All Plumbing & HVAC Repairs & Installations
- Stoppages & Drain Services
- Trenchless Sewer and Water Line Replacement
- Guaranteed Repairs

24-Hour Emergency Service

**10% off any service for our
Boulevard Park neighbors**

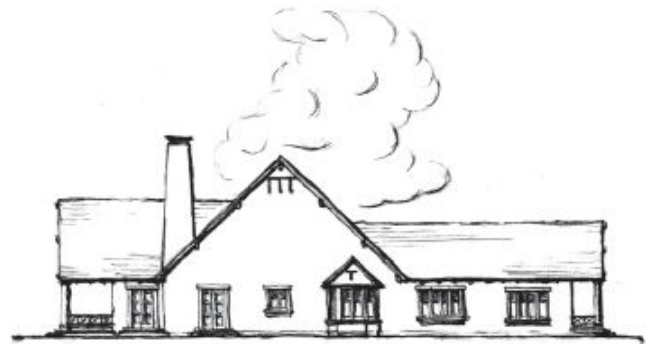
Call: (916) 448-0801

www.abcpumbingandhvac.com

Locally owned and operated for over 50 years

California Contractor's License # 412127

KNUTSON ARCHITECTURE



ERIC KNUTSON

ARCHITECT-AIA, LEED, AP, CGBP

2231 H STREET, SACRAMENTO

925.324.0587

ERIC@KNUTSONARCHITECTURE.COM

COMMERCIAL AND RESIDENTIAL

**SPECIALIZING IN HISTORIC PRESERVATION
AND DETAIL-DRIVEN SUSTAINABLE DESIGN**

MIDTOWN'S UNIQUE & SPECIAL BUSINESSES - ANOTHER HIDDEN GEM

Vacationing in New York last week we included a visit to Manhattan's venerable and majestic central public library, a building of almost unbelievable size and elegance. It's a place where throngs of people still appreciate real books. The reading rooms are respected, studying and research are always in progress, and quiet is observed almost like in a church.

Entering Richard Press Books in Sacramento, you feel some of these experiences on a small scale. This is a business, of course, not a library. New, out of print, and rare books are for sale. But the respect for real books, the charm of this store...elegant and inviting, cozy like a wonderful living room...makes you want to slow down and relax, similar to the feeling you might have in a library.

Owner Richard Press opened his first bookstore in Sacramento in 1979. He has moved the store 3 times. His current book store location is on the corner of 19th Street and "F" Streets in midtown, a 100 plus year old building with tall ceilings and wood paneling on the walls of the style used in the past for the interiors of rail road cars. Richard says that Sacramento is a wonderful city, particularly so for books, with our temperate climate and very low humidity.

Richard L. Press Books is a specialty book store. He deals almost exclusively in the arts. Books feature architecture, photography, sculpture, dance, wine, graphic design, fashion, textiles, Judaica, and similar subjects. Approximately 20,000 volumes are on hand. Richard sells and he buys.

The internet has allowed Richard to serve book lovers locally and around the world. And Richard is one of those really nice, intelligent fellows, helpful and very knowledgeable about his trade. If Richard doesn't have what you are looking for, he can probably find it for you. - *Thank you to Dave Herbert for the submission!*

Richard L. Press Books is at 1831 "F" Street. Phone is 916 447-3413. www.richardpressartbooks.com

FRIENDS OF THE RIVERBANKS - December 2

Friends of the Riverbanks (FORB) will have no formal program in November – everyone is on their own to enjoy the autumn days. FORB will instead join the American River Natural History Association (ARNHA), operators of the Effie Yeaw Nature Center, in the 33rd Annual Wildlife Count on Saturday, December 2.

For details, go to the FORB or ARNHA websites <http://www.friendsoftheriverbanks.org/> or <http://www.arnha.org/>

EDMONDS AND PHILIPP: *Your Way Home*



Whether buying or selling, call the team that lives & works in Boulevard Park.
Recycling vintage homes in record time is our specialty!

Doug Philipp
REALTOR
916.212.1322
dave@davephilipp.com



Liz Edmonds
REALTOR
916.838.1208
liz@lizedmonds.com



Boulevard Park Neighborhood Association Membership Form

Send form with your \$5 to \$15 check per member for the remainder of the calendar year to: P.O. Box 163179, Sacramento, CA 95816-9179

Name: _____

Address: _____

Telephone: _____ E-mail: _____

- New Member** **Renewing Member** **Yes! I want to help. Call me.**
 Would you like to receive the newsletter by email, as well as home delivery?